



Kurumba
MALDIVES



DISABLED PERSONS

FACT SHEET



Kurumba Maldives is a confidently located Island for impaired persons to enjoy the Maldives with. The purpose of this sheet is to prepare our disabled guests with a list of areas may be suitable on the resort and for us to be honest about what areas can be a challenge. Please advise us about your delivery by pre-registering with us [here](#).

AIRPORT

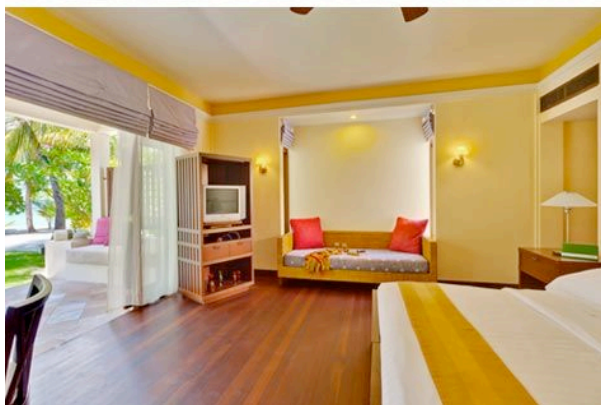
The airport can be a challenge, but our team will be more than happy to wait and assist you. The airport does have a wheelchair lift, several lifts within the terminal and toilets for the disabled. There are no air bridges in the Airport and embarking or disembarking will be via the open tarmac.



The airport team are able to assist where needed and your airline will arrange this with the GMR Special Needs staff. Once you are through immigration and customs, the resort staff will meet you and the Airport's Special Needs staff, to assist in taking you directly to the vessel.

VESSEL TRANSFERS

Getting on and off boats to the jetty at both the airport and the resort is done by our resort staff by manual lifting. Once you are on the vessels, there is ample space onboard and assistance. As the resort is inside the Atoll, and only 10 minutes from the airport, it is very rare that you will encounter rough seas.



THE RESORT

Kurumba has a cement pathway on the inside ring of the resort and directly through the middle. This is suitable for wheelchairs. Golf buggies are available to assist, upon requests. Here is a more detailed list to ensure that there is a clear expectation on the facilities:

• Guest Rooms

Whilst there are no specific disabled room, the resort will put in a ramp for the room if needed. The closest rooms are the Superior Rooms and Garden Villas. The Garden Villas do have stairs in the middle of the room in which a ramp can be placed. The advantage of this villa type is that the bathroom is much more open and more suitable for wheelchairs, whilst not being ideal.



- **Reception**
A ramp available.

- **Restaurants/Bars**

Ming Court	3 steps
Kurumba Mahal	2 steps
Vihamana	1 ramp
La Cucina	1 step
Ocean Grill back pathway	No steps
Al Qasr	No steps
Beach Bar	Ramp on the side
Rendezvous lounge	No stairs
Sand Bar	Soft sand pathway
Pool area	Ramp on the side
Public Areas toilets	No wheelchair accessible toilets



- **Pools**

There are no ramps into the pools. Only ladders are available.

- **Beach**

The Resort is able to provide wood or carpet to assist with access to the beach.

- **Spa**

The spa is not suitable for wheelchairs, however in-room massages can be organised upon requests.

- **Tours**

When going on a tour, you will encounter the same challenges getting on and off the boat. If you are acceptable to this, the most suitable tour (depending on the weather) would be the Sunset and Dolphin Cruise. Note that there are steps to the toilet and there are no disabled toilets on board the vessel.





- **Recreation Area**

One step and a temporary ramp will be required.

- **Guest Boutiques**

The Kurumba Boutique is suitable for wheelchairs however, Breeze Boutique may be a challenge.

- **Conference Facilities**

The Main Conference Hall and VIP Lounge is suitable for wheelchairs. However, there are stairs to the boardroom and thus this area would be unsuitable.

This is a guide to hopefully assist with special need guests. If you have any further questions, please feel free to email kurumba@kurumba.com